

UESTS  
9

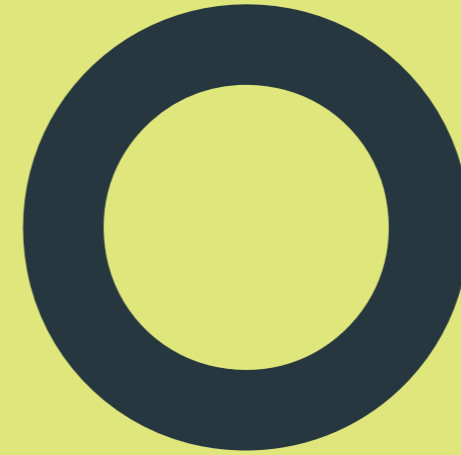
HOARE LEA & SCHOOLS





**Forging the  
future of learning.  
Design that inspires.**

HOARE LEA & SCHOOLS



A pupil-focused approach	6
Schools trend 1: climate emergency	14
Schools trend 2: a different approach	16
Schools trend 3: social value	18
Our project breadth	20

**“Designing inspiring schools for children has never been more important. Real care and experience is required to rise to the new challenges that we face.”**

**PAUL COOPER**  
HEAD OF SCHOOLS



GOLDEN LANE CAMPUS, LONDON



Almost all of us have strong memories of school: the teachers that taught us, the friendships and lessons, and the spaces they all took place in – the sights, smells, and sounds.

Schools should be where young people feel secure and able to thrive. We have more than a decade's experience in designing some of the most pupil-centred schools and academies.

Our dedicated teams focus on human-centred design alongside seamless technology, Modern Methods of Construction, decarbonisation, reduced energy consumption and low running costs – allowing the focus to be on teaching rather than utility.

For us, school design isn't just well-placed pipes and wires, it's about creating inclusive spaces that support the next generation.

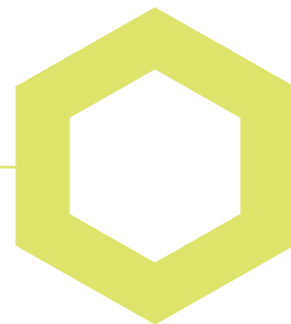
---

**Our approach to schools and academies.**

- We believe that good engineering begins at conception stage.
- We design with affordability in mind, ensuring we always provide deliverable, workable solutions.
- We communicate complex engineering through simple visualisations and animations.
- We bring together our specialists to provide a holistic consultancy service tailored to the needs of the education sector.
- We have a close relationship with regulatory bodies, such as the DfE, which gives us an in-depth knowledge of current and future regulatory requirements.
- We believe that the student is the most important part of any project.

## A pupil-focused and positive approach.

**Paul Cooper,**  
**Head of Schools.**



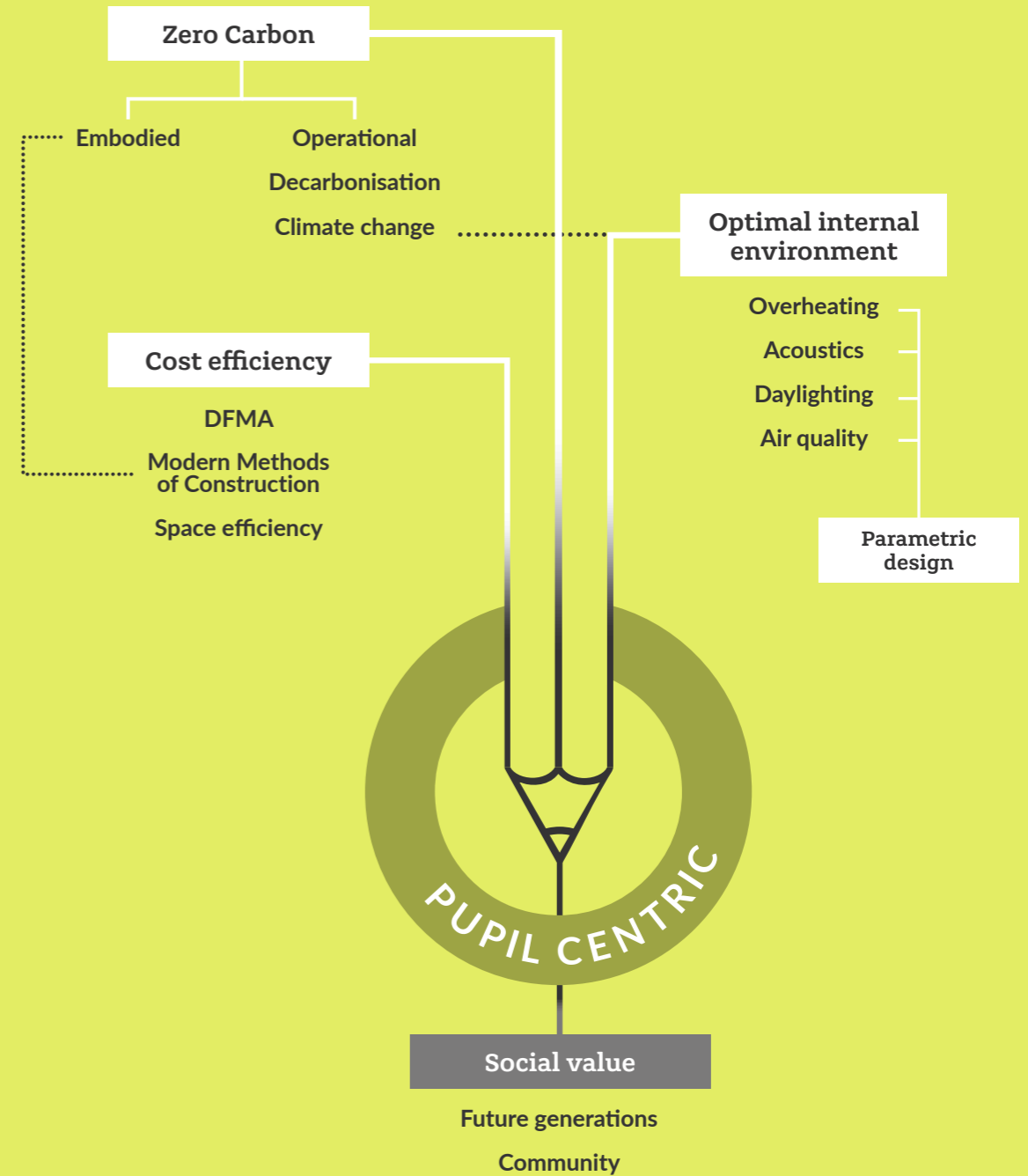
PUPIL-FOCUSED DESIGN

“The UTC project was a superb case of how to achieve something rather special on a budget.”

GARY WOOLLEY  
ESTATES MANAGER

CAMBRIDGE ACADEMY FOR  
SCIENCE AND TECHNOLOGY

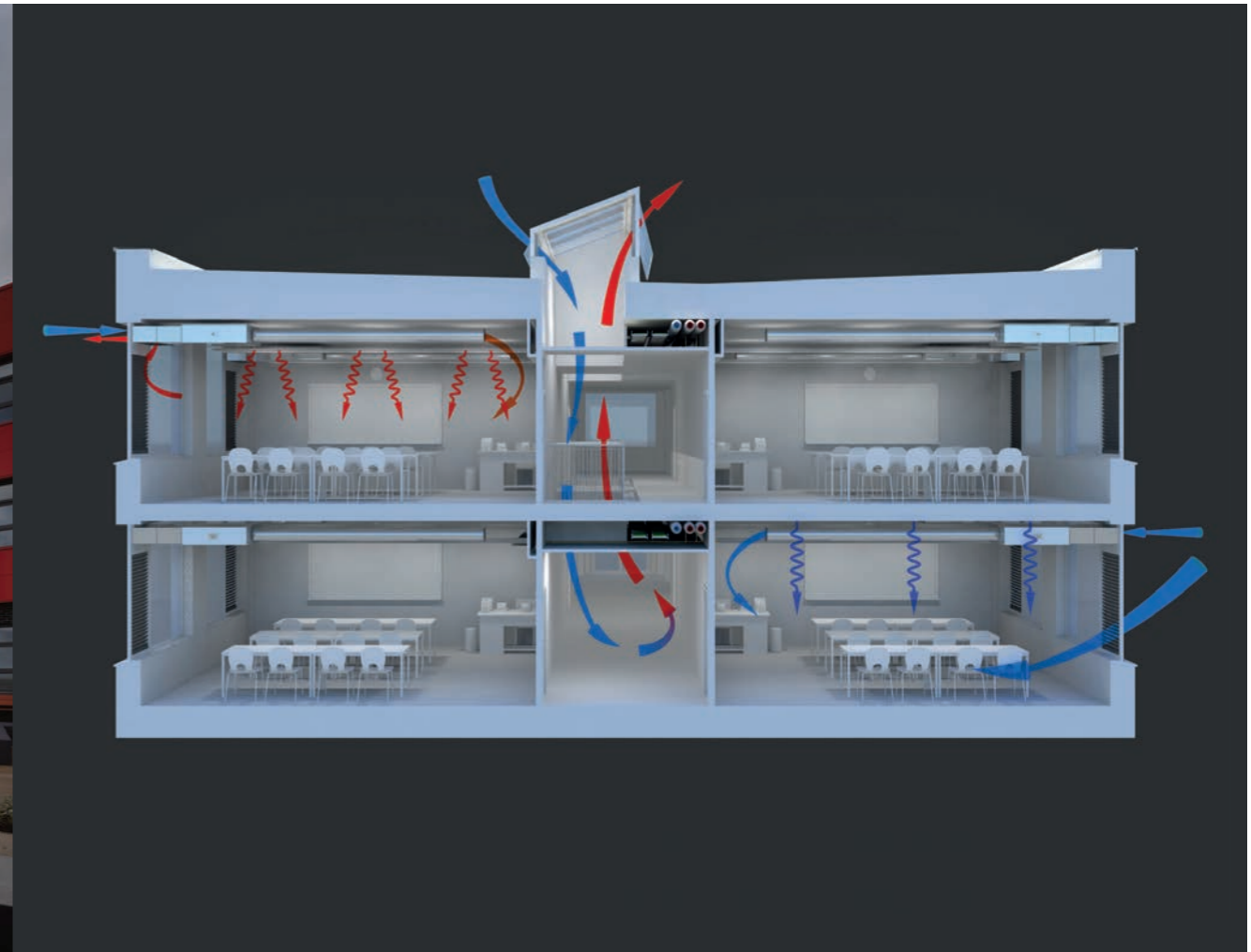
H.





BLACKBURN CENTRAL HIGH SCHOOL WITH CROSSHILL

Photo: Nicholas Hare Architects



Hoare Lea visualisation

## Offsite optimisation.

Our Design for Manufacture and Assembly (DfMA) and Modern Methods of Design strategies means we can provide solutions that are optimised for off-site fabrication. There are numerous benefits DfMA can offer if done well: cost, improved productivity, quality, sustainability targets and site safety.

## Zero Carbon is the new normal.

School buildings are at the forefront of the government's push to decarbonise the UK. This requires our nation to transform the way our buildings are heated and constructed. We're at the forefront of Net Zero solutions, and provide the best practical advice and solutions, ensuring buildings are zero by design.



YSGOL HARRI  
TUDUR SCHOOL

Photo: Phil Boorman



## A single point of experience.

A zero carbon and climate resilient school can only be achieved by a team of experts who work harmoniously together. We bring together industry leading expertise to optimise every element of the design, drawing on our unrivalled experience.

## More than design.

For us, school design is more than a project – it is our commitment to future generations. Schools are the heart of many communities and we actively support these through our STEM ambassadors programme and outreach schemes.





# Aligning with global movements.

## **Responding to the climate emergency.**

DCSF's Climate Change and Schools report found that there are more than 24,000 schools in the UK that account for 2% of all UK Greenhouse gas emissions and 15% of all emissions from the public estate.

This impact means that schools are at the centre of our obligation to care for the planet in which we live.

## **Low energy first, zero carbon second.**

As one of the first signatories to the Building Services Declare initiative, we are at the forefront of zero-carbon school design.

We know that zero carbon schools can be best achieved through intelligent and integrated design rather than expensive use of technology.

GOLDEN LANE CAMPUS, LONDON

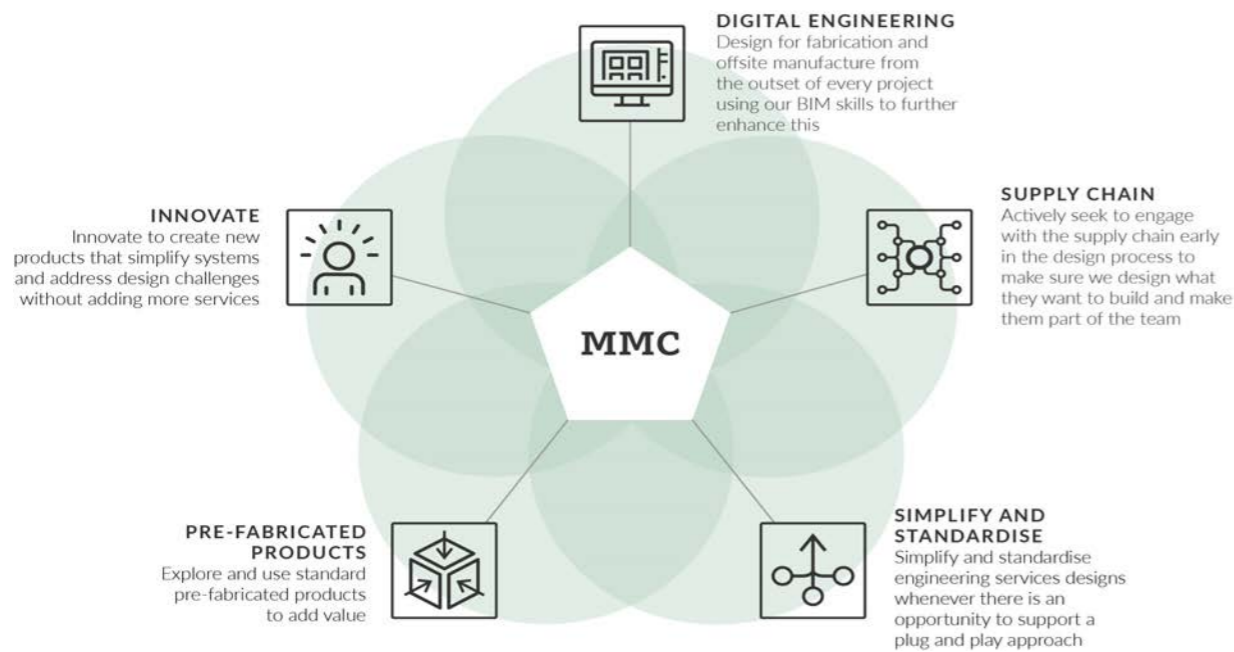
Photo: Peter Durant

SCHOOLS TREND - 1  
CLIMATE EMERGENCY

# Modern Methods of Construction.

## Needs Modern Methods of Design.

### How we embrace MMC in every project.



### Adopting new standards.

Modern Methods of Construction (MMC) is a government approach that will transform construction and design. This in turn will modernise the way that schools are delivered, and we wholly support, and are actively driving, this industry-wide move.

### More than a concept.

MMC is not simply fabricating buildings off-site; true MMC requires designers to deliver engineering solutions that are optimised for the construction method.

To complement this, we take a Modern Methods of Design (MMD) approach. This ensures that all of our designs are optimised for both modular and off-site fabrication.

MMC requires a collaborative team effort and we have developed a range of tools to allow us to communicate engineering solutions. Our in-house service zone tool means we can optimise distribution routes and our digital engineering experts use the digital model as the 'single source of truth', improving accuracy and efficiency while eliminating error.

SCHOOLS TREND - 2  
A DIFFERENT APPROACH



HAMPTON ACADEMY

Image: Astudio



# Social value. Designing for the community.

Schools are more than places of education; they sit at the heart of a community. Not only do they provide a place for young people to flourish, but sporting facilities can support local health & wellbeing, and adult education opportunities can be created.

Protecting the longevity of local communities is of the utmost importance. Through designing inclusive, exciting and nurturing environments, we can deliver positive change.

Our industry does not work in isolation. With our collaborative and sensitive approach, we create tailored buildings that complement and support the wellbeing and resilience of individual communities.



SCHOOLS TREND - 3  
SOCIAL VALUE



# Experience makes all the difference.

## A reassuring reputation.



**Heyford Park Free School.**  
Split campus on recommissioned RAF site, plus refurbishment of a Cold War era sports facility to provide specialist teaching spaces.



**Maiden Erlegh School.**  
A new free school in Reading that builds on the existing school and incorporates renewable technologies.



**Walton High School.**  
This secondary on the outskirts of Milton Keynes is one of the UK's largest schools and had a bespoke yet standardised design approach.



**Blackburn Central High.**  
The amalgamation of three existing schools into one. The vast building has 80% of its heating needs met by a biomass boiler.



**Strood Academy.**  
State-of-the-art development to transform poor-performing schools, with a focus on renewable energy.



**Chobham Academy.**  
Renovation of the 2012 Olympics security control centre structure into an all-age academy for a newly formed residential community.



**SEMh Leeds schools.**  
Social, Emotional, and Mental Health (SEMh) facilities delivered through three new strategically located schools for Leeds city.



**Harris Academy.**  
A low-energy, highly-efficient 1,150-pupil secondary school building constructed while maintaining the existing school.



**Priestmead Primary.**  
Redevelopment for the largest primary school in the UK, involving phased demolition and a new-build primary and nursery.



**Francis Askew.**  
An eco new-build primary school built on existing school grounds in Hull. Can cater to 420 pupils, along with a 39-place nursery.



**Hessle High School.**  
A new-build secondary school, plus refurbished listed building. Located in East Yorkshire, it is part of The Consortium Academy Trust.



**Oxfordshire UTC.**  
A new-build specialist STEM college in Didcot on a two-hectare greenfield site, which blends academia and vocational training.



HOARE LEA (H.)

## Engineers of human experiences.

Hoare Lea is an award-winning engineering consultancy with a creative team of engineers, designers, and technical specialists. We provide innovative solutions to complex engineering and design challenges for buildings.

Irrespective of the scale or complexity of a project, we provide a full range of MEP, environmental, and sustainability services, bringing buildings to life and ensuring that they perform in operation as well as they look.

[HOARELEA.COM](https://www.hoarelea.com)

